



# Karaat

## Entrance Mats • Indoor

Karaat mats feature a slip-resistant rubber backing and a solution-dyed carpet surface designed to stop dust, dirt, and moisture at your door and provide a safe walking surface.



- Solution-dyed nylon fibers provide superior colour and wash fastness.
- 100 % Nitrile EXS™ Rubber backing prevents curling and cracking in all types of weather.
- LUTRADUR™ primary substrate will not fray, reduces linting, and provides a strong bond between the rubber and the carpet.
- High Twist heat set nylon fibers are resistant against crushing and allow dirt to filter into the mat rather than remaining on top of the carpeted surface.
- Bleach / UV resistant.



**GDmatsEU**  
[www.gdmats.eu](http://www.gdmats.eu)  
[gdmats@gdmats.eu](mailto:gdmats@gdmats.eu)

# Karaat

Entrance Mats • Indoor



## Standard Sizes (cm)

60x85	115x250
75x85	115x300
85x115	150x200
85x150	150x240
85x300	150x250
115x180	150x300
115x200	200x200*
115x240	200x300*

Maximum size: 200 x 550 cm

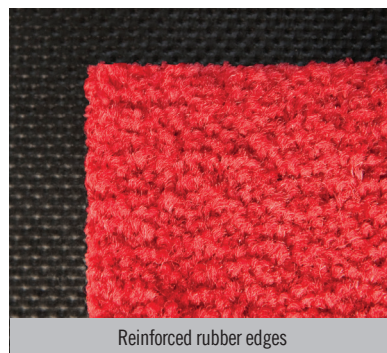
Size Tolerance: +/- 2%

\*Grey and Anthracite are the only colours available in widths wider than 150 cm. All other colours can be purchased in widths wider than 150 cm with a minimum order quantity of 100 linear meters.

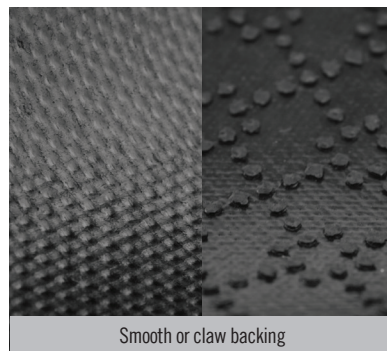
\*\*Only available in 85, 115 cm widths



100% Nylon Carpet

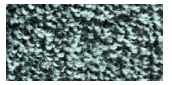


Reinforced rubber edges

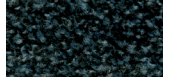


Smooth or claw backing

#10\*  
grey



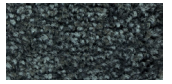
#20  
slate grey



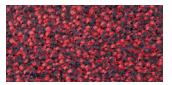
#30  
brown



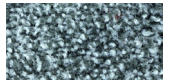
#50\*  
anthracite



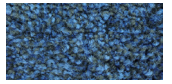
#60  
red\*\*



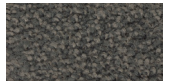
#70  
blue steel



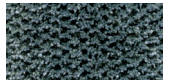
#80  
blue\*\*



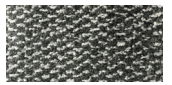
#90  
black mink



#103  
silverstone



#104  
black  
granite



#105  
clear red



#107  
clear black



#130\*\*  
clear  
granite



## Specifications

Yarn: Type 6 Solution Dyed Nylon

Carpet weight: 820 gr/m<sup>2</sup>

Rubber: Nitrile EXS™ (Border 2.5 mm / Center 1.5 mm)

Total weight: 2.820 gr/m<sup>2</sup>

Also available in 3 mm rubber backing



**GDmatsEU**  
www.gdmats.eu  
gdmats@gdmats.eu