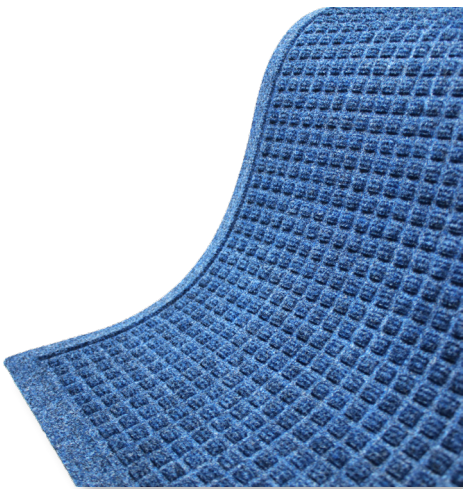




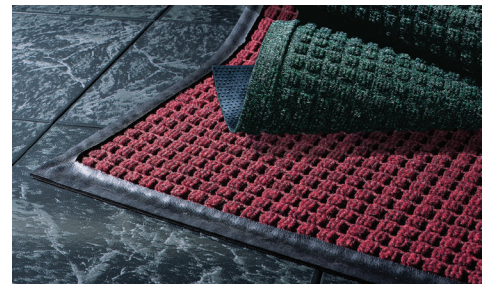
Waterhog Classic & Diamond

Entrance Mats • Indoor/Outdoor

WaterHog Classic mats are durable, stain-resistant mats with a unique bi-level design that traps dirt and moisture, keeping your floors clean, dry, and safe.



- **Clean & Dry** - Raised nubs remove dirt and moisture from shoes and trap it below foot level.
- **Eco-Friendly** - Solution-Dyed PET carpet made from 100% recycled plastic bottles. Nitril Rubber backing is PVC-Free.
- **Waterdam Borders** - The borders are designed to hold water and dirt on the mat keeping it off carpets and floors.
- **Durable** - Reinforced rubber nubs prevent pile from crushing and extend the performance life of the mat.
- **Fade & Stain Resistant** - Solution-dyed PET fabric is resistant to staining, dries quickly, and will not fade or rot.
- **Easy to Clean and Maintain** - Simply use commercial cleaning machines, vacuum, high pressure cleaner or steam clean.



GDmatsEU
www.gdmats.eu
gdmats@gdmats.eu

Waterhog

Classic & Diamond

Entrance Mats • Indoor/Outdoor



Standard Sizes (cm)

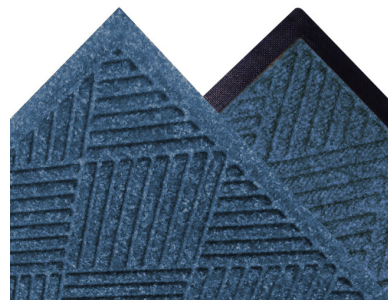
60x90	115x180*
90x150	180x250*

Size Tolerance: +/- 2%

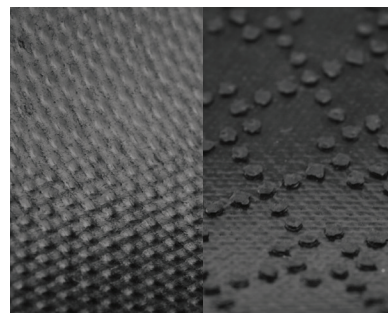
*Camel only available in 60x90 and 90x150



Raised nubs



Fashion or rubber border

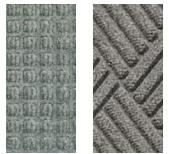


Smooth or claw backing

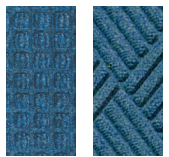
#54
Charcoal



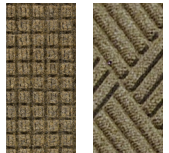
#57
Medium
Grey



#56
Medium
Blue



#50
Camel



Specifications

- Carpet:** 100% Recycled Solution Dyed P.E.T.
- Weight:** 820 gr/m²
- Rubber Backing:** 100% Nitrile Rubber
- Thickness:** 3.63 mm - Border
1.98 mm - Body
- Total Weight:** 2.8 kg/m²
- Border Options:** Fashion and rubber border



GDmatsEU
www.gdmats.eu
gdmats@gdmats.eu