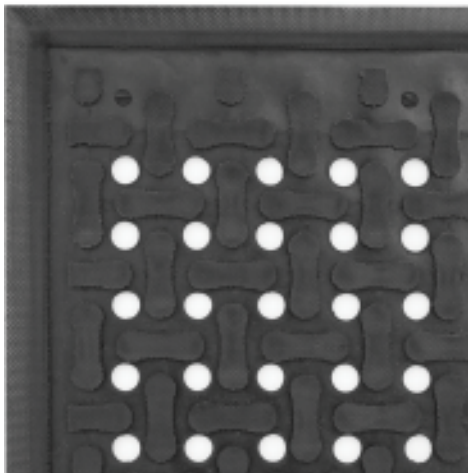


GD -Comfort Flow

Anti-Fatigue Mats • Indoor

Comfort Flow is a flow-through mat with excellent anti-fatigue properties designed for wet areas where grease, oil, and chemicals may be present.



- Anti-microbial treated to guard against odours and degradation.
- Nitrile Cushion is oil, grease, chemical resistant and ideal for wet applications.
- **Static Dissipative certified allowing for use around sensitive electronic equipment.**
- Lightweight and easy to clean.
- Welding safe.



GD - Comfort Flow

Anti-Fatigue Mats • Indoor



Standard Sizes (cm)

54x86

86x142

86x277

Size Tolerance: +/- 5%



Grease proof



Ideal for wet applications



Thickness 0.95 mm

Specifications

Colour:	Black
Thickness:	0,95 mm
Rubber:	Nitrile Rubber
Durometer:	50 to 55



GDmatsEU
www.gdmats.eu
gdmats@gdmats.eu